

## Data sheet

### Mounting flange for type 166

Page 1/4

P/N  
720158-02-2

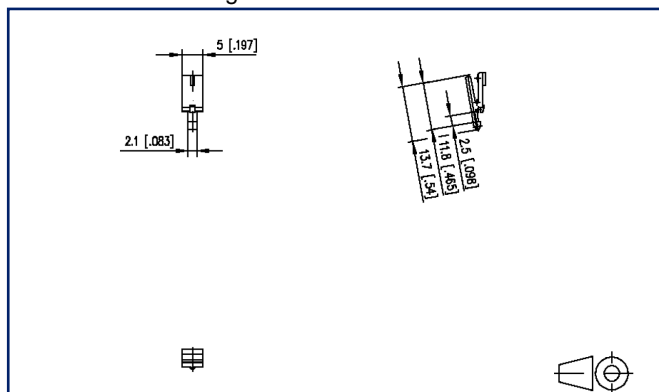
2023/06/23

Version: P

## Illustrations



Dimensional drawing



See enlarged drawings at the end of document

## Product specification

- The mounting flange is inserted into the groove in the side of the terminal block and secured to the printed circuit board by being press fit into the hole in the printed circuit board
- Mounting flanges for left and right side are necessary for mounting.
- Variants: 720158-01-2 black for pc board 1.00 mm / 0.039 inches, 720158-02-2 black for pc board 1.50 mm / 0.059 inches



# U | Contact

Data sheet

Page 2/4

## Mounting flange for type 166

P/N  
720158-02-2

2023/06/23

Version: P

### Technical Data

#### Material

insulating material	PA66
Glow-Wire Flammability GWFI	960 °C acc. to IEC 60695-2-12
Glow-Wire Flammability GWIT	775 °C acc. to IEC 60695-2-13



# U | Contact

Data sheet

Page 3/4

## Mounting flange for type 166

P/N  
720158-02-2

2023/06/23

Version: P

### Accessories from

P/N	Designation
311651	RP023xxHBNF Type 165
311652	RP02JxxHBNF Typ 165
311661	RP023xxHBWC Type 166
311662	RP02JxxHBWC Typ 166



# U | Contact

Data sheet

## Mounting flange for type 166

Page 4/4

P/N  
720158-02-2

2023/06/23

Version: P

### Illustrations

Dimensional drawing

